

## Nisus® Negative Pressure Wound Therapy System

For use in hospitals, long term care facilities, and home-care settings

- Only 2 lbs. for portability
- Battery life up to 48 hours
- Patient Runtime
- Alarm Log
- Lock Restriction to ensure trouble free, accurate operation
- Sleep feature dims light for longer lasting battery life and discreetness



Battery charger and carrying bag included

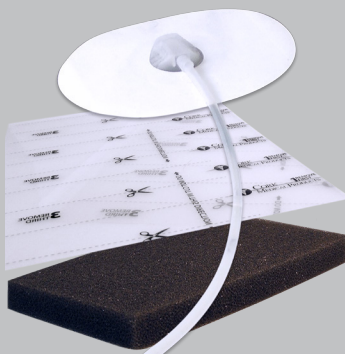


Patent Pending



### Nisus Pump

HCPCS Code E2402, 2-Year Warranty



### Wound Dressing Kit (Medium & Large)

HCPCS Code A6550



### Canisters (250 mL & 500 mL)

HCPCS Code A7000

## System Overview

Nisus Negative Pressure Wound Therapy System provides gentle powered suction to treat and promote wound healing by aiding in the removal of excess exudates, infectious material, and tissue debris.

Indicated for use in patients who would benefit from negative pressure wound therapy, Nisus NPWT system is recommended for patients with chronic, acute, traumatic, sub-acute and dehisced wounds, partial-thickness burns, pressure ulcers, diabetic ulcers, and venous ulcers, flaps, and grafts.



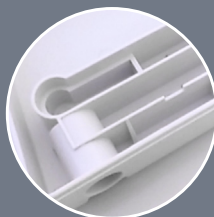
### Nisus Pump

Revolutionary pump gives patients increased mobility without sacrificing the power physicians demand for optimal wound healing results. Multiple features for both the physician and patients, including user-friendly interactive interface with easy to read LCD screen.



### Wound Dressing Kit

Advanced wound dressing kit provides optimal seal without sacrificing patient comfort, allowing physicians the best modality of treatment for negative pressure wound therapy. Designed for user-friendly application, the kit is comprised of all components necessary to dress a wound for negative pressure wound therapy.



### Canisters

Nisus canisters, used in conjunction with the wound therapy pump and wound dressing kit, collect and store wound drainage. Unique canister design sustains pressure under variable conditions, allowing patients the flexibility to be portable while maintaining a hermetic seal.